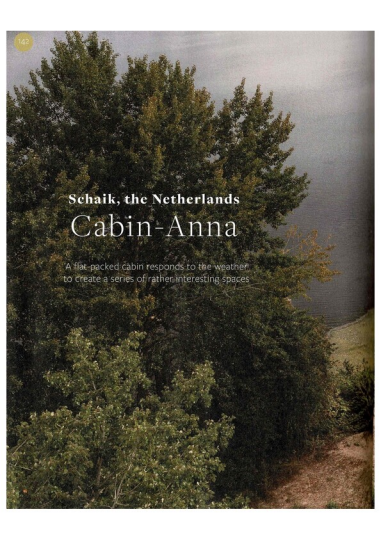


CABINS + hideaways

Imaginative small homes from around the world



enki
THE MONOGRAPH SERIES



Schaik, the Netherlands
Cabin-Anna

A flat-packed cabin responds to the weather
to create a series of rather interesting spaces



"IN THE SPIRIT
OF QUIRKY
DESIGN, A
BATH TUB IS
HIDDEN UNDER
THE GROUND"

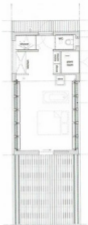




"YOU CAN CHOOSE TO FALL ASLEEP UNDER AN ENDLESS STARRY SKY"



Experience the famous ANNA Cabin, a dwelling which lets the guest decide how it should be configured



the
miniature

Where?

De Maashorst Nature Reserve
& The Biesbosch National
Park in the Netherlands

Best for

Beaver spotting and canoeing

Family friendly?

Yes. Sleeps two adults
and two children

Getting there

De Maashorst: 15 hours from
Rotterdam Ferry Port
The Biesbosch: 1 hour from
Rotterdam ferry port

More info

holenberg.com
Cabin-ANNA.com

There are not many cabins that adapt to your every whim. But Caspar Schols was asked by his mother to build a flexible space for dinner parties or theatrical events, and so he set about creating something rather innovative. The movable walls of his first attempt attracted so much attention that he won a scholarship to study architecture and was given the financial backing to develop his invention. Eight years on, anyone can book a night in an ANNA cabin at De Maashorst Nature Reserve or The Biesbosch National Park in the Netherlands. "ANNA is a dynamic home in the shape of an open platform to live with, rather than against, the elements by playing with the configuration of the layers of the house," Caspar explains. When the wooden shell is closed there is a cosy indoor cabin, but open the walls and there you are, right in the heart of nature. In the spirit of quirky design, a bath is hidden under the ground. But perhaps the magical thing here is that you can choose to fall asleep under an endless starry sky and wake up to just the sound of the birds.

